



WOODS

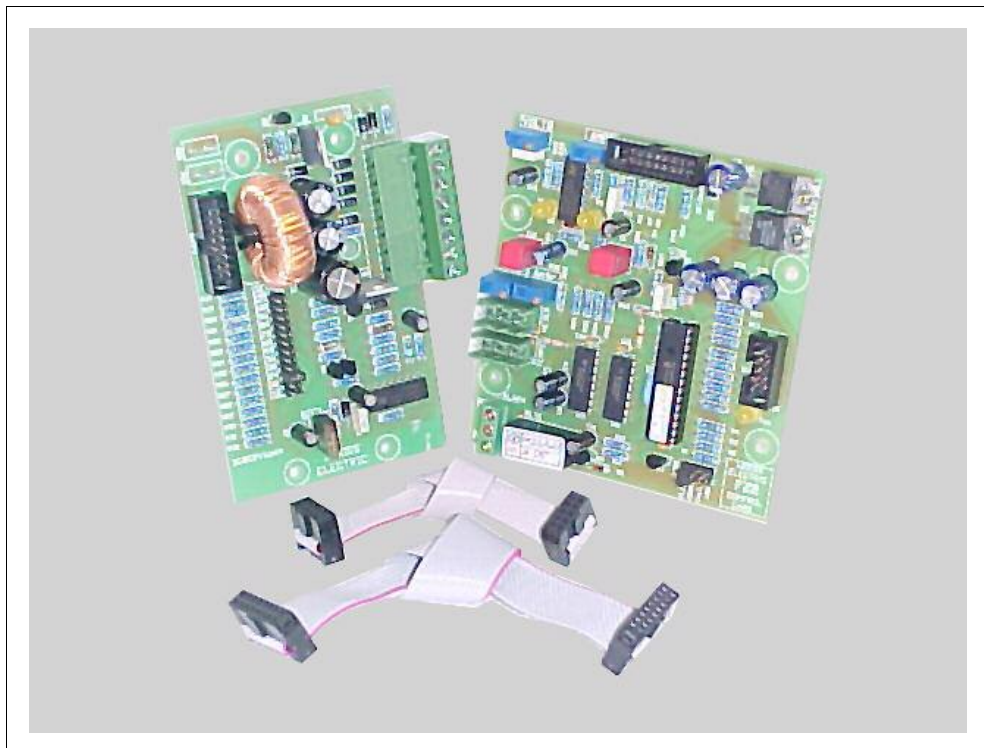
BATTERY CHARGERS



Component & Parts Identification Catalogue

issue : 1

2006



ELECTRONICS

- 3 DIALOMATIC CONTROLLERS**
- 4 DIALOMATIC FILTERS**
- 5 DIALOcharge CONTROLLERS**
- 6 AQUALINE C.O.P.R control cards**
- 7 AUTOMATIC CONTROLLERS**
- 8 INTERCONNECT CARDS**
- 9 NEPTUNE CONTROLLERS**
- 10 INDICATORS**
- 11 BETAcharge cards**
- 12 RIBBON CALBES**

HARDWARE

- 13 OVERLOADS**
- 14 CIRCUIT BREAKERS**
- 15 TRANSFORMERS**
- 16 TRANSFORMERS**
- 17 DIALOMATIC RECTIFIERS**
- 18 METERS**
- 19 METER-INTERCONNECT CARD-SCR MODULE**
- 20 S.C.R's**
- 21 RECTIFIERS-SHUNT**
- 22 SWITCHES**
- 23 CONNECTORS**
- 24 CONNECTORS**
- 25 THERMOSTATS - TEMP. COMPENSATOR-DIALOMATIC POT**
- 26 FANS-GRILLS-KNOB**

- ORDER FORM**
- FZ2UK brochure**

COMPONENT IDENTIFICATION:

COMPONENT IDENTIFICATION:



MODEL	PART #
W1220	411



MODEL	PART #
W1240	412
W2420	412
W2440	412
W3630	412
W4820	412



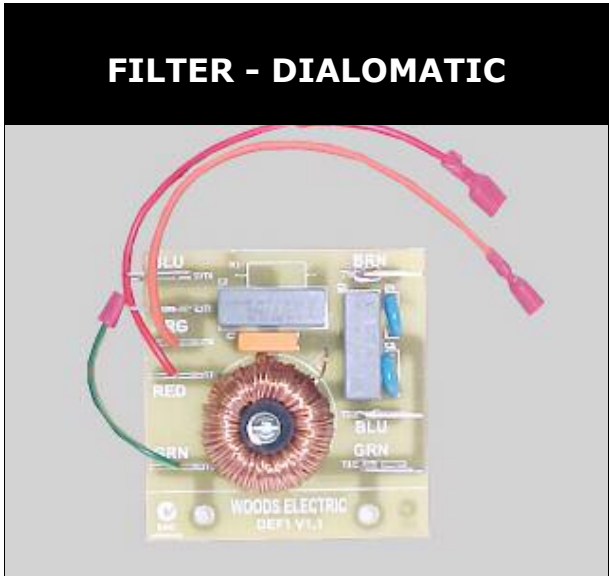
MODEL	PART #
W1280	413
W2480	413
W4840	413

COMPONENT IDENTIFICATION:

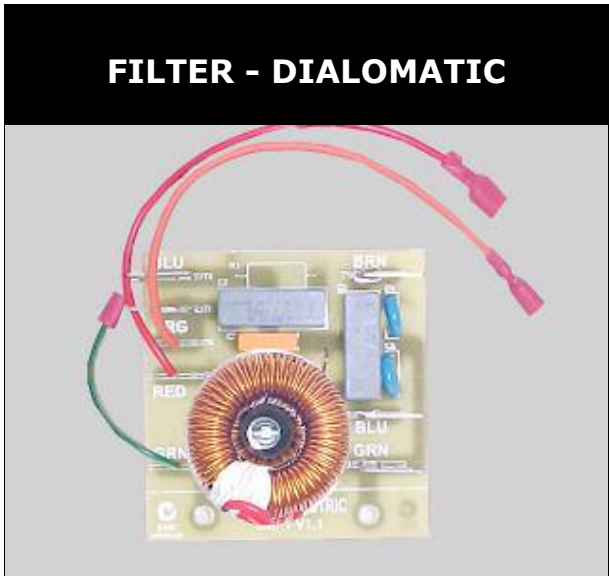
COMPONENT IDENTIFICATION:



MODEL	PART #
W1220	07W1



MODEL	PART #
W1240	07W2
W2420	07W2
W2440	07W2
W3630	07W2
W4820	07W2

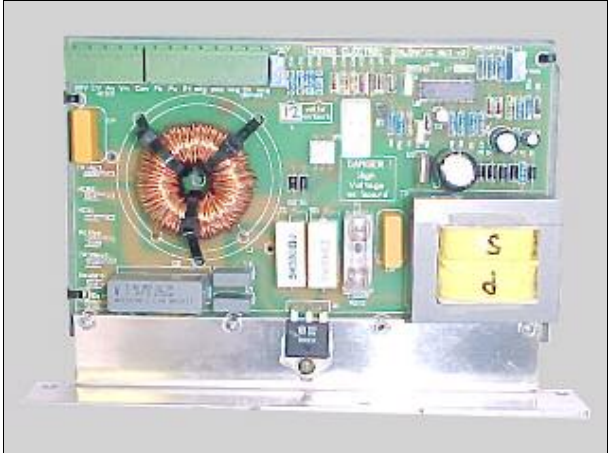


MODEL	PART #
W1280	07W3
W2480	07W3
W4840	07W3

COMPONENT IDENTIFICATION:

COMPONENT IDENTIFICATION:

CONTROLLER - DIALOMATIC



MODEL	PART #
W1220	41007.12
W1240	41207.12
W2420	41107.24
W1280	41307.12
W2440	41207.24
W2480	41307.24
W3630	41207.36
W4820	41307.48
W4840	41307.48

CONTROLLER - DIALOCHARGE



MODEL	PART #
D1230	41D1230
D1260	41D1260
D2415	41D2415
D2430	41D2430
D2460	41D2460
D4815	41D4815
D4830	41D4830

SWITCHPOT - DIALOCHARGE



MODEL	PART #
all DIALOcharge	79D200

COMPONENT IDENTIFICATION:

COMPONENT IDENTIFICATION:

COPR1 - AQUALINE



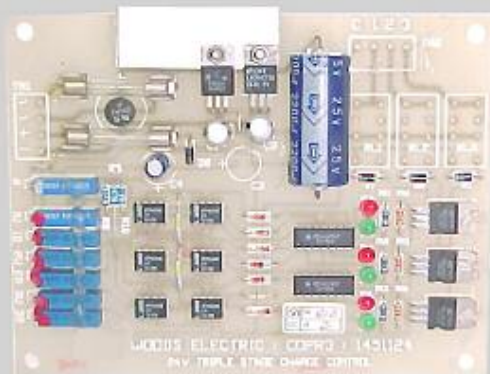
MODEL	PART #
1220Q	41COPR1.12
2410Q	41COPR1.24

COPR2 - AQUALINE



MODEL	PART #
1240Q	41COPR2.12
2420Q	41COPR2.24
2440Q	41COPR2.24
3630Q	41COPR2.36
4820Q	41COPR2.48

COPR3 - AQUALINE

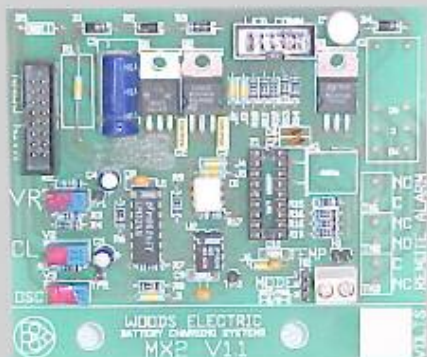


MODEL	PART #
1280Q	41COPR3.12
2480Q	41COPR3.24
4840Q	41COPR3.48
MRN2440Lx	41COPR3.24

COMPONENT IDENTIFICATION:

COMPONENT IDENTIFICATION:

**MX2 CONTROLLER
AUTOMATIC - FILTERED**



MODEL	PART #
1215A - 1215F 1230A - 1230F 1260A - 1260F 12100A - 12100F	41MX2.12
2407A - 2407F 2415A - 2415F 2430A - 2430F 2460A - 2460F 24100A - 24100F	41MX2.24
* pre 1999	
** use FZ2 UPGRADE KIT (#FZ2UK)	

**G99 CONTROLLER
AUTOMATIC - FILTERED**



MODEL	PART #
1215A - 1215F 1230A - 1230F 1260A - 1260F 12100A - 12100F	41G99.12
2407A - 2407F 2415A - 2415F 2430A - 2430F 2460A - 2460F 24100A - 24100F	41G99.24
* pre 2000	
** use FZ2 UPGRADE KIT (#FZ2UK)	

**FZ1 CONTROLLER
AUTOMATIC - FILTERED**

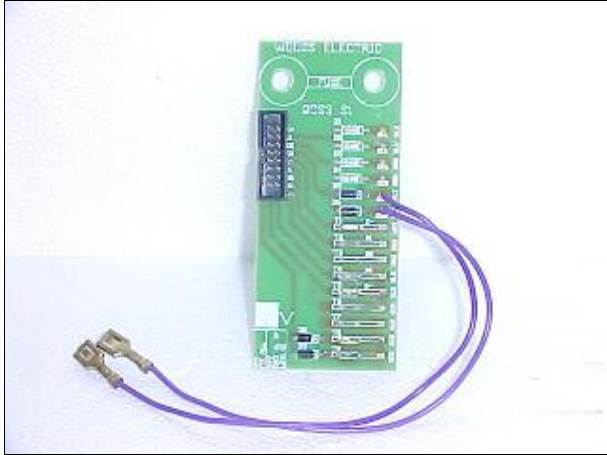


MODEL	PART #
1215A - 1215F 1230A - 1230F 1260A - 1260F 12100A - 12100F	41FZ1.12
2407A - 2407F 2415A - 2415F 2430A - 2430F 2460A - 2460F 24100A - 24100F	41FZ1.24
* pre 2001	
** use FZ2 UPGRADE KIT (#FZ2UK)	

COMPONENT IDENTIFICATION:

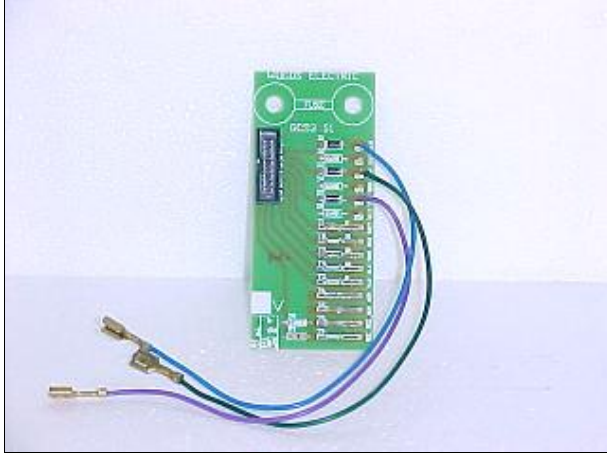
COMPONENT IDENTIFICATION:

**INTERCONNECT CARD
AUTOMATIC - FILTERED**



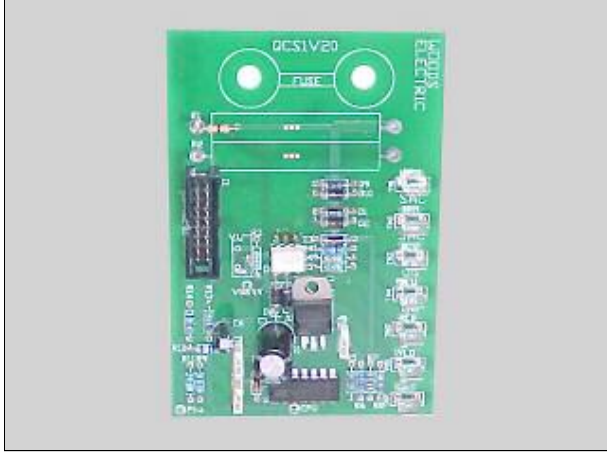
MODEL	PART #
all AUTOMATIC	44QCS1
all FILTERED	44QCS1

**INTERCONNECT CARD
NEPTUNE**



MODEL	PART #
1215N	441215
3 wire	
1230N 1260N 12100N 2407N 2415N 2430N	441230
6 wire	
2460N 24100N	441260

**INTERCONNECT CARD
AUTOMATIC - FILTERED**



MODEL	PART #
12V	44Q21.12
24V	44Q21.24
30V	44Q21.30
36V	44Q21.36
48V	44Q21.48
For a new replacement, use #44DCQC	

COMPONENT IDENTIFICATION:

COMPONENT IDENTIFICATION:

**VRCL1 CONTROLLER
AUTOMATIC - FILTERED**

**NO
IMAGE**

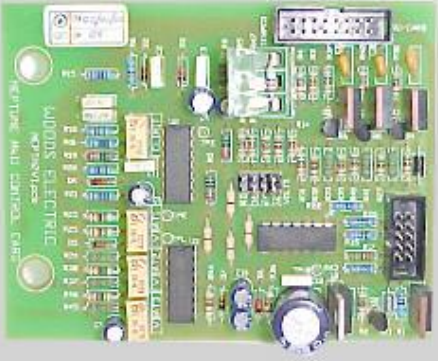
MODEL	PART #
1215A - 1215F 1230A - 1230F 1260A - 1260F 12100A - 12100F	41VRCL1.12
2407A - 2407F 2415A - 2415F 2430A - 2430F 2460A - 2460F 24100A - 24100F	41VRCL1.24
* pre 1997	
** use FZ2 UPGRADE KIT	

**VRCL3 CONTROLLER
NEPTUNE**



MODEL	PART #
1215N 1230N 1260N 12100N	41VRCL3.12
2407N 2415N 2430N 2460N 24100N	41VRCL3.24
* pre 2001	

**NEP CONTROLLER
NEPTUNE**

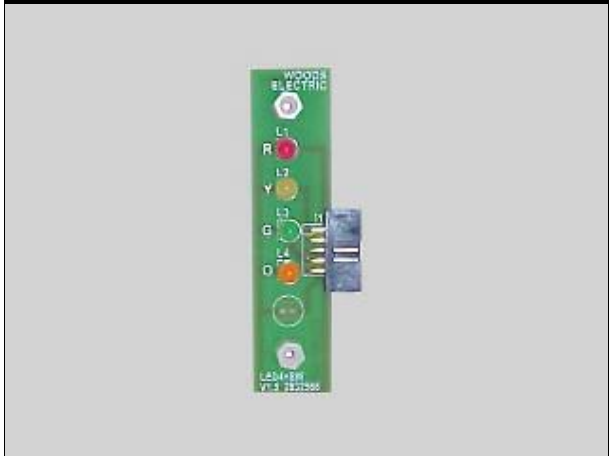


MODEL	PART #
1230N 1260N 12100N 2407N 2415N 2430N 2460N 24100N	41NEP21

COMPONENT IDENTIFICATION:

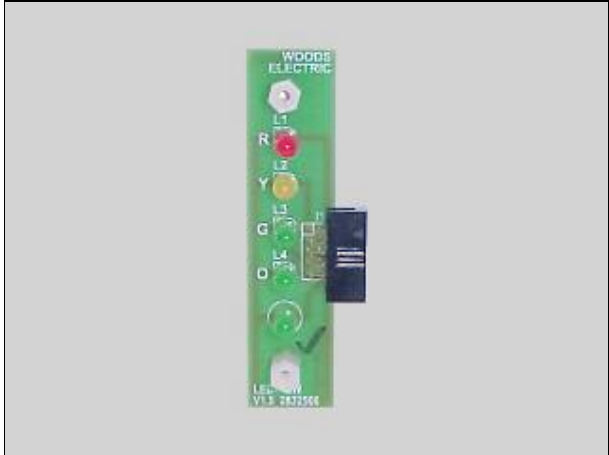
COMPONENT IDENTIFICATION:

**4 LED INDICATOR
AUTOMATIC - FILTERED**



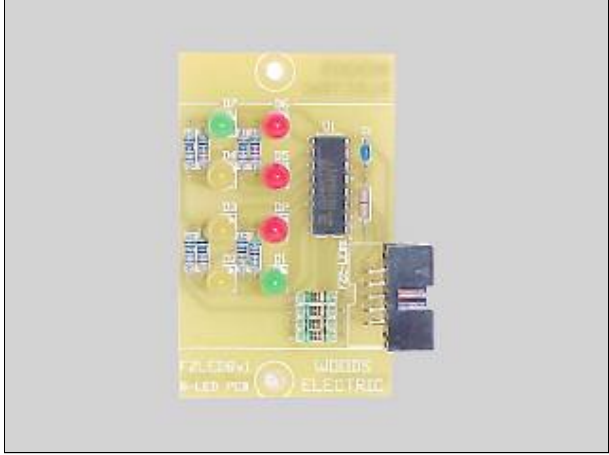
MODEL	PART #
all AUTOMATIC	834
all FILTERED	834

**5 LED INDICATOR
NEPTUNE**



MODEL	PART #
all NEPTUNE	835

**8 LED INDICATOR
BETACHARGE**

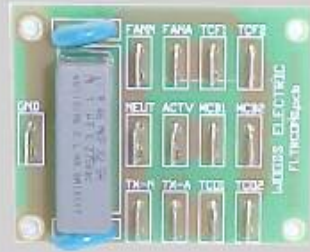


MODEL	PART #
all BETACHARGE	838

COMPONENT IDENTIFICATION:

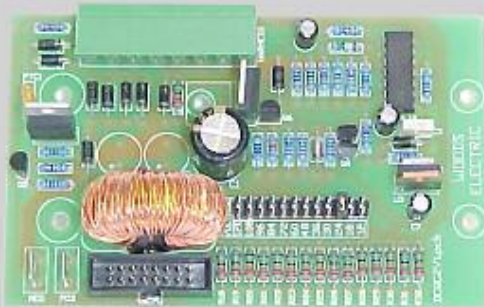
COMPONENT IDENTIFICATION:

**MAINS FILTER
BETACHARGE**



MODEL	PART #
all BETACHARGE	07AUTO
NEPTUNE 2002 onwards	07AUTO

**INTERCONNECT CARD
BETACHARGE**



MODEL	PART #
all BETACHARGE	44DCQC

**CONTROLLER
BETACHARGE**



MODEL	PART #
all BETACHARGE	41FZ2

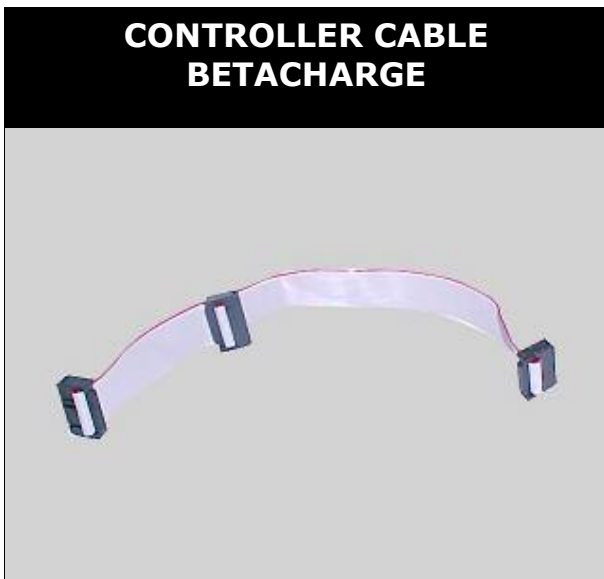
COMPONENT IDENTIFICATION:



MODEL	PART #
all AUTOMATIC	36710
all FILTERED	36710
all NEPTUNE	36710
all BETACHARGE	36710
Standard length 200mm	
Other lengths available by order	



MODEL	PART #
all AUTOMATIC	36710
all FILTERED	36716
all NEPTUNE	36716
all BETACHARGE	36716
Standard length 200mm	
Other lengths available by order	



MODEL	PART #
all BETACHARGE 60+ Amp units	36716.2

COMPONENT IDENTIFICATION:

COMPONENT IDENTIFICATION:

MANUAL RESET OVERLOAD



RATING	PART #
2 Amps	5202M
4 Amps	5204M
8 Amps	5208M

MANUAL RESET OVERLOAD



RATING	PART #
15 Amps	5215M
20 Amps	5220M
26 Amps	5226M

**TOGGLE SWITCH
CIRCUIT BREAKER**



RATING	PART #
5 Amps	52L105AC
10 Amps	52L110AC

COMPONENT IDENTIFICATION:

COMPONENT IDENTIFICATION:

**TOGGLE SWITCH
CIRCUIT BREAKER**



RATING	PART #
10A	52J20AC
50A	52J50AC
100A	2 X 52J50AC

**TOGGLE SWITCH
CIRCUIT BREAKER**



RATING	PART #
2 Amps	52M02
4 Amps	52M04
6 Amps	52M06
10 Amps	52M10
16 Amps	52M16
20 Amps	52M20
32 Amps	52M32
63 Amps	52M63

**TOGGLE SWITCH
CIRCUIT BREAKER**



RATING	PART #
3 X 10 Amps	52M10.3
3 X 20 Amps	52M20.3
3 X 40 Amps	52M40.3
3 X 63 Amps	52M63.3

COMPONENT IDENTIFICATION:

COMPONENT IDENTIFICATION:

TRANSFORMER 300VA/600VA



MODEL	PART #
W1220	301220
1215 A/F/N	301220
2407 A/F/N	301220
W1240	301240
W2420	302420
1230 A/F/N	301240
2415 A/F/N	302420
REPLACE WITH 30SD15750	

TRANSFORMER 1700VA



MODEL	PART #
W1280	use 30SD151500
W2440	use 30SD151500
W3630	303630
W4820	302440
W2480	use 2 off 30SD151500
W4840	use 2 off 30SD151500
1260 A/F/N	use 30SD151500
2430 A/F/N	use 30SD151500
W7215	303630
3025 A/F/N	303025
3620 A/F/N	303630
4815 A/F/N	use 2 off 30SD151500

TRANSFORMER 3500VA



MODEL	PART #
2460 A/F/N	302460
4830 A/F/N	302460

COMPONENT IDENTIFICATION:

COMPONENT IDENTIFICATION:

TRANSFORMER 750VA



MODEL	PART #
W2420	30AT15750
1230 A/F	30AT15750
2415 A/F	30AT15750
All DIALOcharge	30AT15750
All BETAchance II	30AT15750
All NEPTUNE 2003	30AT15750

TRANSFORMER 750VA



MODEL	PART #
All DIALOcharge	30SD15750
All BETAchance II	30SD15750
All NEPTUNE 2003	30SD15750

TRANSFORMER 1500VA



MODEL	PART #
All DIALOcharge	30SD151500
All BETAchance II	30SD151500
All NEPTUNE 2003	30SD151500

COMPONENT IDENTIFICATION:

COMPONENT IDENTIFICATION:



MODEL	PART #
W1220	401220
W2420	402420



MODEL	PART #
W1240	401240
W2440	402440
W3630	402440
W4820	404820



MODEL	PART #
W1280	401280
W2480	402480
W4840	404840

COMPONENT IDENTIFICATION:

COMPONENT IDENTIFICATION:

AMMETER



MODEL	PART #
W1220	631220

COMBINED DUAL AMP AND VOLTMETER



MODEL	PART #
W1240	641240
W1280	641280
W2420	642420
W2440	642440
W2480	642480
W3630	643630
W4820	644820
W4840	644840
Other ranges by order	

SPECIFIC VOLT OR AMMETER



RANGE	PART #
0-20 AMP	63021
0 - 40 AMP	63041
0 - 80 AMP	63081
0 - 100 AMP	63101
0 - 20 VOLT	62021
0 - 40 VOLT	62041
0 - 50 VOLT	62051
0 - 80 VOLT	62081
Other ranges by order	

COMPONENT IDENTIFICATION:

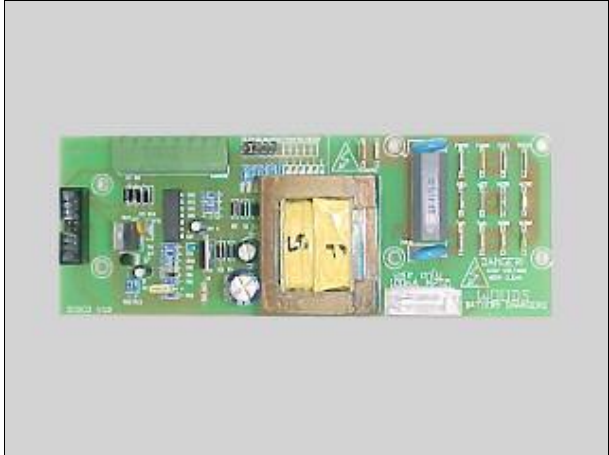
COMPONENT IDENTIFICATION:

DUALMETER - DIALOCHARGE



MODEL	PART #
D1230	64D1230
D1260	64D1260
D2415	64D2415
D2430	64D2430
D2460	64D2460
D4815	64D4815
D4830	64D4830

**INTERCONNECT CARD
BETACHARGE II**



MODEL	PART #
All BETAcharge II	44DCQC3

**S.C.R / RECTIFIER
MODULE**



MODEL	PART #
1260B	879114
2460B	879114

COMPONENT IDENTIFICATION:

COMPONENT IDENTIFICATION:

S.C.R. 30 Amp



MODEL	PART #
all AUTOMATIC all BETACHARGE all FILTERED all NEPTUNE < 48Vdc	87552
all AUTOMATIC all BETACHARGE all FILTERED all NEPTUNE > 48Vdc	87557

S.C.R. 60 Amp



MODEL	PART #
1260 A/F/N	87504
2460 A/F/N	87504

S.C.R. 100 Amp



RANGE	PART #
12100 A/F/N	871004
24100 A/F/N	871004

COMPONENT IDENTIFICATION:

COMPONENT IDENTIFICATION:

BRIDGE RECTIFIER



MODEL	PART #
all CHARGERS	403510

RECTIFIER



MODEL	PART #
D1260	401280

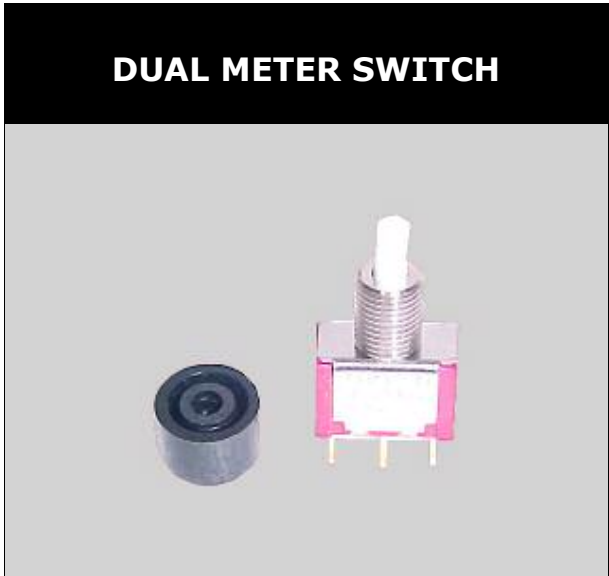
CURRENT SHUNT



RATING	PART #
25 Amps	36Z025
50 Amps	36Z050
100 Amps	36Z100

COMPONENT IDENTIFICATION:

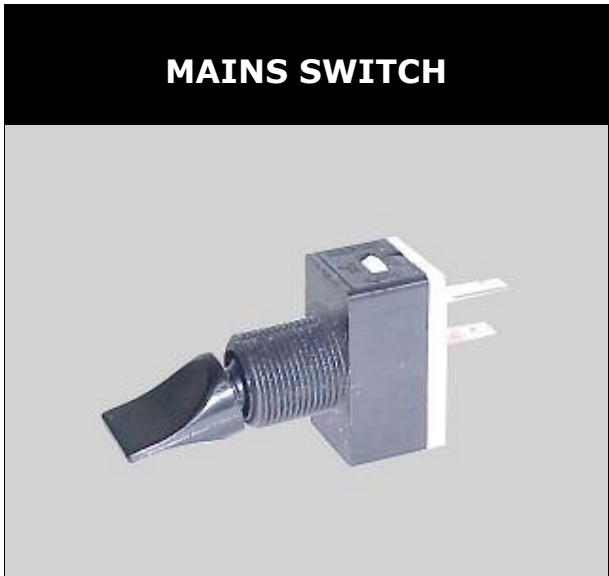
COMPONENT IDENTIFICATION:



MODEL	PART #
all DIALOMATIC	55406



MODEL	PART #
W1220	55100



MODEL	PART #
all DIALOMATIC	55475

COMPONENT IDENTIFICATION:

COMPONENT IDENTIFICATION:



TYPE	PART #
RED	344R
BLACK	344B



MODEL	PART #
RED	34490.1
BLACK	34490.4



TYPE	PART #
RED	31100
BLACK	31101

COMPONENT IDENTIFICATION:



TYPE	PART #
UNIT	33050
inc. 2m CABLES	36AP050



MODEL	PART #
UNIT	33175
inc. 2m CABLES	36AP175



RATING	PART #
RED 20 Amp	36020
BLACK 20 Amp	36021
RED 40 Amp	36040
BLACK 40 Amp	36041
RED 80 Amp	36080
BLACK 80 Amp	36081

COMPONENT IDENTIFICATION:

COMPONENT IDENTIFICATION:

THERMOSTAT



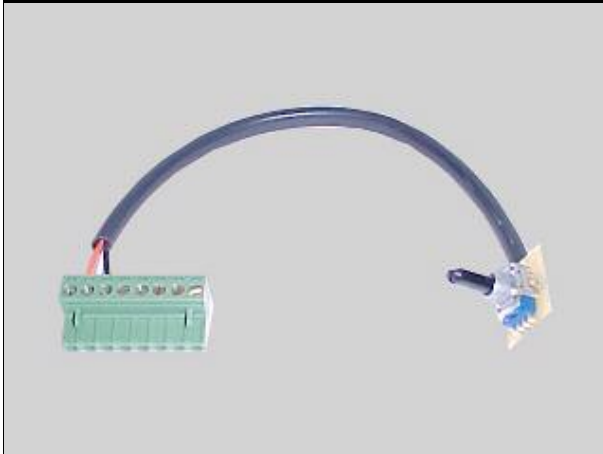
TYPE	PART #
all CHARGERS	
50°C FAN SWITCH	43505
100°C TRANSFORMER CUTOUT	431005
MOUNT BRACKET	43T5

BATTERY TEMPERATURE COMPENSATION MODULE



MODEL	PART #
all BETACHARGE	36009
all NEPTUNE	36009

DIALOMATIC POTENTIOMETER



MODEL	PART #
all DIALOMATIC	36103W

COMPONENT IDENTIFICATION:

COMPONENT IDENTIFICATION:

120mm COOLING FAN



TYPE	PART #
all CHARGERS	
12Vdc	90124.12
24Vdc	90124.24
110Vac	90124.1
240Vac	90124
240Vac 25mm	90125

120mm FAN GRILLE



MODEL	PART #
all CHARGERS	90120G

KNOB



MODEL	PART #
all DIALOMATIC	79K2



FZ2 Upgrade Kit



Features :

PERFORMANCE

- Phase-shift control
- Smoother recharge
- Minimises ripple
- Precise control

CONTROL

- Micro-controlled
- Multi-stage recharge programs
- Four (4) program selections for different battery types
- GEL, NORML, CALCM, AGM

RECHARGE ROUTINES

- FLAT charge
- SOFT START
- BOOST charge
- EQUALISE charge
- FLOAT charge
- DOZE monitoring

DISPLAY

- LED indication of charging status and faults

BATTERIES

- Gel cell
- Sealed lead-acid
- Deep cycle LA
- Lead-calcium
- Wet ni-cad
- Genesis®/Optima®

ALERTS/ALARMS

- High/low battery volts
- Faulty battery
- No battery
- Reverse battery
- Excessive loads

OPTIONS

- Temperature compensation
- Voltmeter
- Ammeter
- Alert/Alarm relay outputs

INSTALLATION:

- direct replacement
(some models require minimal fitting and wiring)

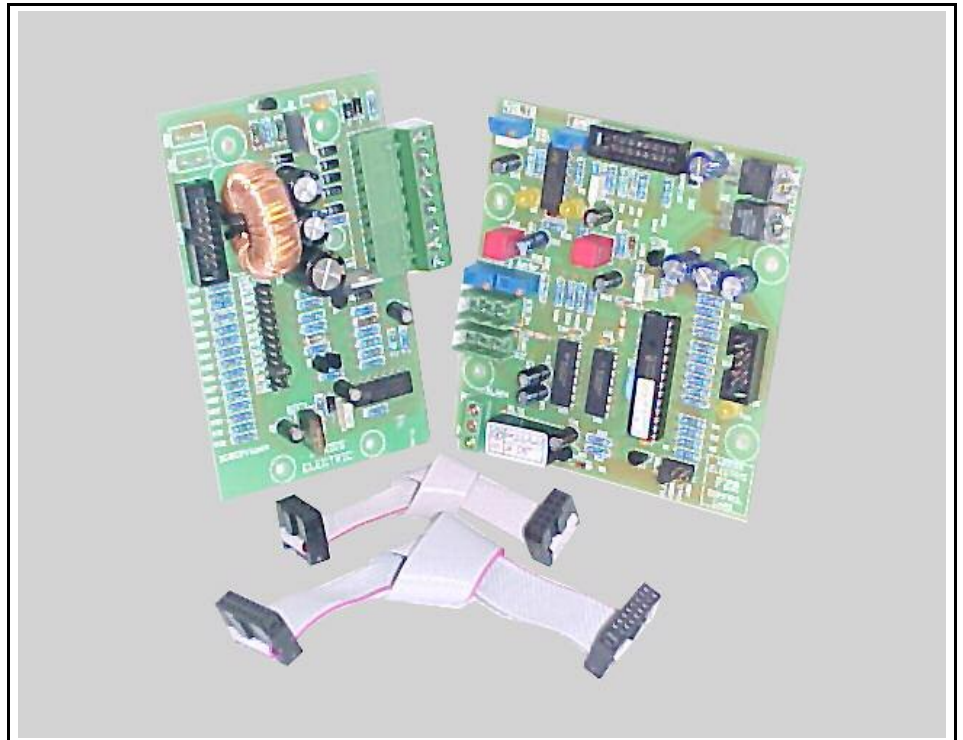
COMPATIBLE

- WOODS Automatic & Filtered chargers
- MX2 controller
- G99 controller
- FZ1 controller



DIALOs and NEPTUNEs excluded

from.... **WOODS Battery Chargers**



Convert you present WOODS battery charger with the NEW FZ2 Upgrade Kit (FZ2UK).

The **FZ2UK** will greatly improve the already excellent performance of your WOODS battery charger.

The **FZ2UK** boasts all of the latest features and advantages of the multiple recharging programs of the ***β*ETCharge** and **BETCharge II**.

All the necessary components are supplied in the kit with easy to follow instructions for no hassle installation.

The WOODS **FZ2UK** is a sophisticated electronic multiple-taper charger controller for most types of batteries. It employs microprocessor-control to precisely regulate charging voltages and currents during all phases of charging. The **FZ2UK** successfully charges deeply discharged batteries and batteries which are loaded during charging.

The **FZ2UK** will not overcharge batteries which are already fully charged.

The **FZ2UK** is ideally suited to unattended battery systems which must be kept in a good state of charge for months without maintenance. The **FZ2UK** "sleeps" when necessary, minimising loss of electrolyte over prolonged periods, and delivers a replenishing charge only as required by battery self-discharge.

Part Number : 41FZ2UK